

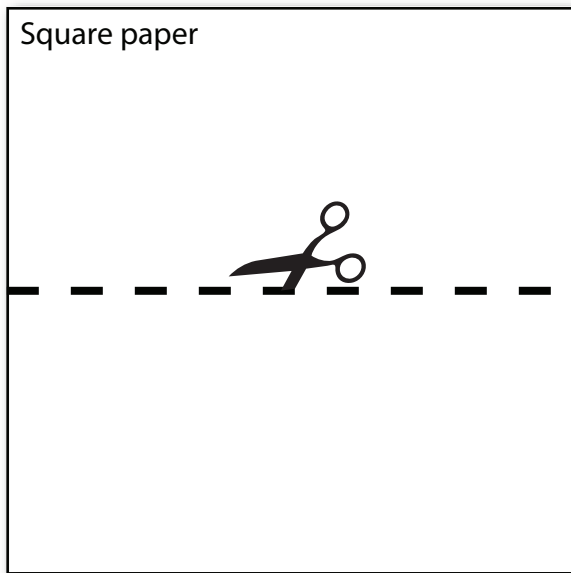
Christmas Card Wreath

Making small wreaths out of used or leftover Christmas cards is a great way to re-purpose last years cards. These wreaths can be used as Christmas tree ornaments, decorations for presents, napkin rings, or mini photo frames.

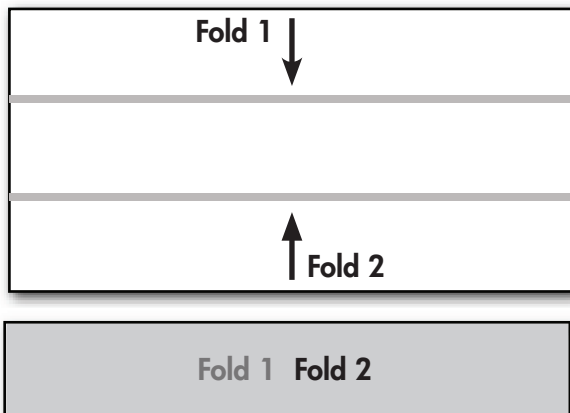
Step 1. Select a leftover or used Christmas or holiday card and remove the back panel.

Step 2. Draw a square onto the back of the front panel aligning it to the part on the front you want to show.

Step 3. Cut out the square and then cut it in half to create two equally sized rectangles.



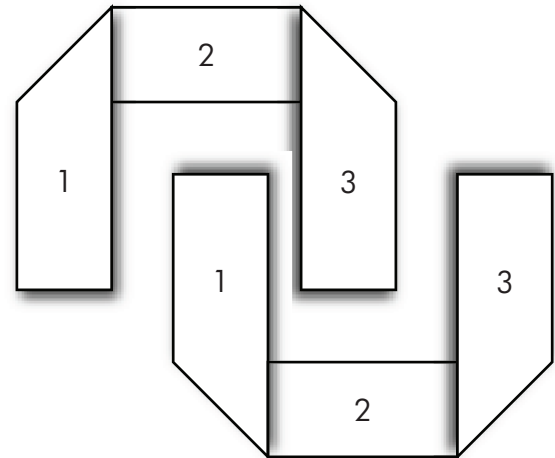
Step 4. Starting with the first rectangle, fold it vertically 2 times to create a strip 1/3 the height of the original. Repeat this step with the second rectangle



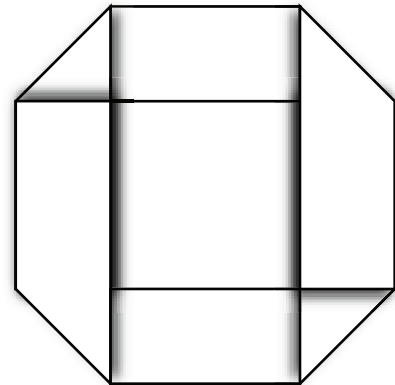
Tools and Materials

- Old Christmas Cards
- Glue
- Pencil
- Ruler
- Scissors
- Template

Step 5. Fold the ends of each strip at 45 degrees forming 3 equal segments



Step 6. Tuck in the opposite ends of each piece to each other to join them. Use a dab of glue if necessary.



Step 7. Add a bow, sticker or string to finish the effect.

Additional decorations.

- Tiny metallic balls or other ornament like pieces